

Explanation of Results STEP 2013

All STEP questions are marked out of 20. The mark scheme for each question is designed to reward candidates who make good progress towards a solution. A candidate reaching the correct answer will receive full marks, regardless of the method used to answer the question.

All the questions that are attempted by a student are marked. However, only the 6 best answers are used in the calculation of the final grade for the paper.

There are five grades for STEP Mathematics which are:

- S – Outstanding
- 1 – Very Good
- 2 – Good
- 3 – Satisfactory
- U – Unclassified

The rest of this document presents, for each paper, the grade boundaries (minimum scores required to achieve each grade), cumulative percentage of candidates achieving each grade, and a graph showing the score distribution (percentage of candidates on each mark).

STEP Mathematics I (9465)

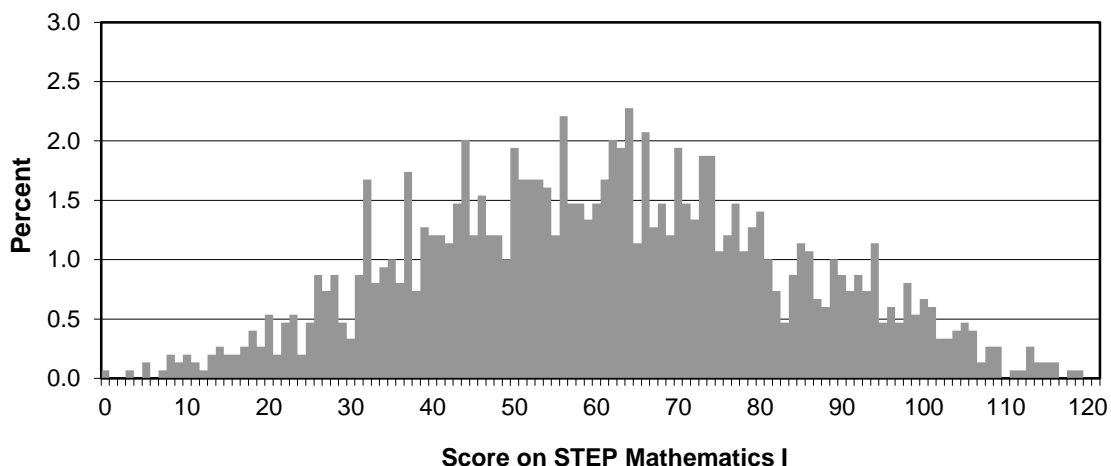
Grade boundaries

Maximum Mark	S	1	2	3	U
120	100	82	64	40	0

Cumulative percentage achieving each grade

Maximum Mark	S	1	2	3	U
120	4.8	18.6	45.0	81.6	100.0

Distribution of scores



STEP Mathematics II (9470)

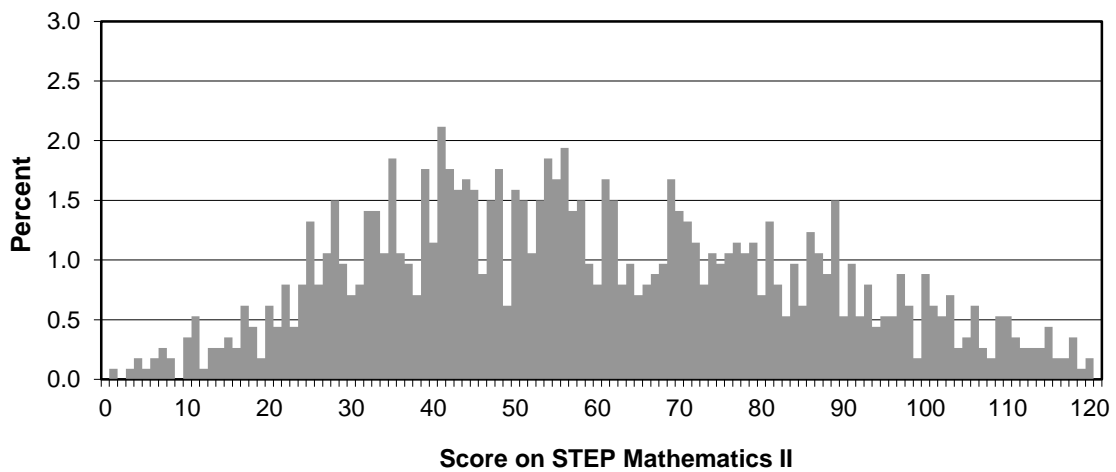
Grade boundaries

Maximum Mark	S	1	2	3	U
120	100	79	67	32	0

Cumulative percentage achieving each grade

Maximum Mark	S	1	2	3	U
120	8.0	24.8	38.3	85.4	100.0

Distribution of scores



STEP Mathematics III (9475)

Grade boundaries

Maximum Mark	S	1	2	3	U
120	85	63	48	27	0

Cumulative percentage achieving each grade

Maximum Mark	S	1	2	3	U
120	12.3	36.6	56.7	85.4	100.0

Distribution of scores

