

We are Cambridge Assessment Admissions Testing, part of the University of Cambridge. We give every student the opportunity to let their true potential shine.

### Where can I find out more?

---

About the OLAT:

[admissionstesting.org/olat](https://admissionstesting.org/olat)

Admissions testing support:

[admissionstesting.org/help](https://admissionstesting.org/help)

University of Oxford – Admissions Information:

+44 (0)1865 288000

[ox.ac.uk/ask](https://ox.ac.uk/ask)

[ox.ac.uk/olat](https://ox.ac.uk/olat)

### Key dates for the OLAT 2020

---

Registration opens	1 September
Requests for modified question papers	By 30 September
Registration deadline	15 October by 18.00 BST <i>This is the same date as the UCAS application deadline</i>
Test date	4 November

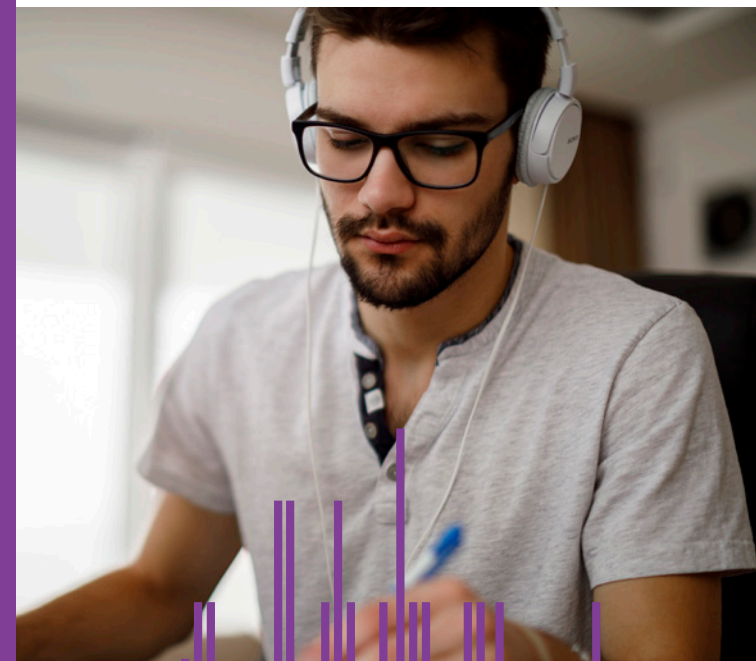
### Results

---

The test is marked by the University of Oxford. You are not automatically sent your test results, but you may request your score as part of the usual University of Oxford feedback process.

# OLAT

ORIENTAL LANGUAGES APTITUDE TEST



## Guide for students

## Register by 15 October 2020



 **Cambridge Assessment  
Admissions Testing**

The Triangle Building  
Shaftesbury Road  
Cambridge  
CB2 8EA  
United Kingdom

All details are correct at the time of going to print in January 2020 but may be subject to change.  
Please check the OLAT website for the latest information.



[admissionstesting.org](https://admissionstesting.org)



[@admissionstests](https://twitter.com/admissionstests)

Copyright © UCLES 2020 | CER/3209/VZ/JAN20



\* 8993837610 \*



## The Oriental Languages Aptitude Test (OLAT)

---

You need to take the OLAT if you are applying to study a Middle Eastern language as your main subject – Arabic, Hebrew, Jewish Studies, Persian or Turkish – as part of one of these undergraduate courses at the University of Oxford:

- Oriental Studies
- European and Middle Eastern Languages
- Oriental Studies with Classics (T9Q8)
- Religion and Oriental Studies (VT69).

If you are applying for a joint course, you may also need to take a separate test in your other subject. You can confirm this at: [ox.ac.uk/tests](https://ox.ac.uk/tests).

The test is only one part of the overall application process.

### What's in the test?

---

The OLAT is a 30-minute test of your ability to learn a new language quickly. It assesses your ability to analyse how languages work, in a way which doesn't depend on your knowledge of any particular language.

## Where do I take the OLAT?

---

**You must take the test at a centre that is authorised to run tests administered by Cambridge Assessment Admissions Testing** (for most test-takers this is their own school or college). Check with your Exams Officer if your school or college is already registered as a centre that can run our tests.

If your school or college is not already registered as a centre, they can apply to become a test centre.

The deadline for centre applications is 30 September. [admissionstesting.org/become-a-centre](https://admissionstesting.org/become-a-centre)

If you are not able to take the test at school or college, you need to find an authorised open test centre instead. [admissionstesting.org/find-a-centre](https://admissionstesting.org/find-a-centre)

## How and when do I register?

---

**You need to be registered as a candidate by the test centre.** Please ask the Exams Officer at your centre to register you. Please also ask for your candidate entry number as proof that your registration is complete.

Registration opens on 1 September 2020 and closes on 15 October 2020. **As late registrations are not accepted, ask your centre to register you for the OLAT well before the registration deadline. Please note that some open centres set internal deadlines in advance of the general registration deadline. Test registration is separate from your UCAS application.**

You must give your centre your name, date of birth and UCAS number exactly as they have been entered on your UCAS application.

## How much does the test cost?

---

You don't need to pay a test entry fee but your school/college/test centre may charge an administration fee for running the test.

## What if I need Access Arrangements?

---

Access Arrangements are available if you have a disability or special requirement, and are normally entitled to support for exams.

You need to inform your centre of any special requirements when they register you for the test. They will ask for full details and a copy of your medical evidence. Requests for modified question papers must be submitted by your centre by 30 September 2020.

## How do I prepare for the OLAT?

---

Doing practice papers in timed conditions is an excellent way to prepare and gets you used to the test format and question style. You can find past papers and further guidance at: [ox.ac.uk/olat](https://ox.ac.uk/olat).

