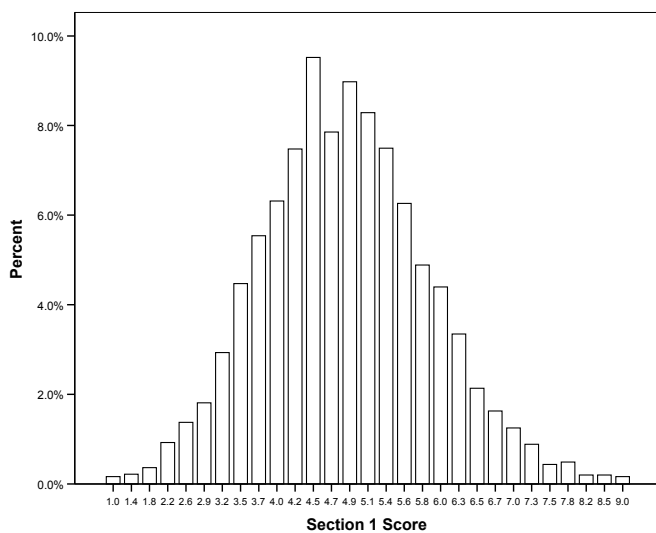


## Explanation of BMAT Scores

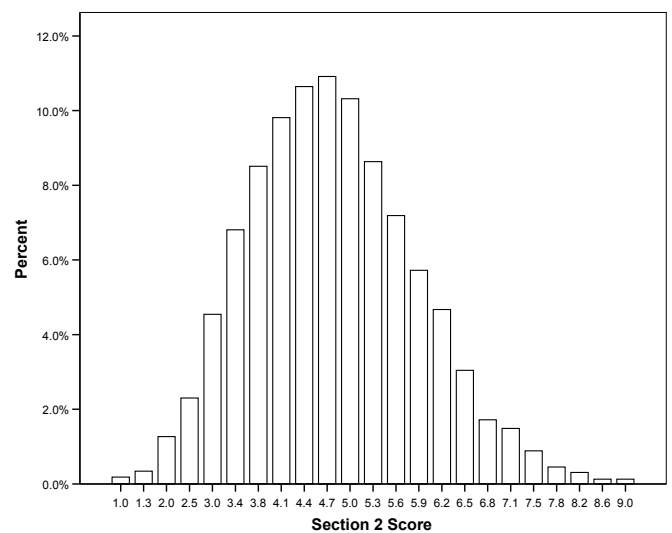
Results for Sections 1 and 2 are reported on the BMAT scale, which runs from 1 (low) to 9 (high), with scores being reported to one decimal place. Extreme scores are expected to be comparatively rare. The scale has been designed so that typical applicants to the most highly selective undergraduate university courses in the UK (who are by definition academically very able) will score around 5.0. The best applicants will score more highly, but 6.0 represents a comparatively high score and only a few very exceptional applicants will achieve BMAT scores higher than 7.0.

The distributions of the October 2007 BMAT scores for Sections 1 and 2 are shown below.

### Section 1: Aptitude and Skills



### Section 2: Scientific Knowledge and Applications



### Section 3: Writing Task

The essays are marked holistically, and awarded a single score on a scale from 0 to 15 that reflects the overall quality of the essay.

In arriving at the score, markers are instructed to consider:

- Has the candidate addressed the question in the way demanded?  
i.e. have they
  - rephrased the proposition or explained its implications;
  - set out reasonable or plausible counter-propositions;
  - proposed reasonable ways of assessing the competing merits of the propositions or resolved their conflict logically?
- Have they organised their thoughts clearly?
- Have they expressed themselves clearly using concise, compelling and correct English?
- Have they used their general knowledge and opinions appropriately?

Each essay is double marked. If the two marks are the same, or occupy adjacent positions on the scale, the average of the two marks is reported. If there is a larger discrepancy in the marks, the essays are marked for a third time, and the final mark awarded is checked by the BMAT Assessment Manager.

## Scoring scale

### Score 0

An irrelevant, trivial or missing answer.

### Score 3

An answer that has some bearing on the question and is written, more or less, in comprehensible English but which does not address the question in the way demanded, is incoherent or unfocussed, or uses English in a confusing or grossly incorrect way.

### Score 6

An answer that addresses most of the components of the question and is arranged in a reasonably logical way. The English may be rather weak or there may be significant elements of confusion in the argument. The candidate may misconstrue certain important aspects of the main proposition or its implication or may provide an unconvincing or weak counter proposition.

### Score 9

A reasonably well-argued answer that addresses ALL aspects of the question, making reasonable use of the material provided and generating a reasonable counter-proposition or argument. The use of English is reasonably clear and the argument relatively rational. There may be some weakness in the effectiveness of the English, the force of the argument or the coherence of the ideas, or some aspect of the argument may have been overlooked.

### Score 12

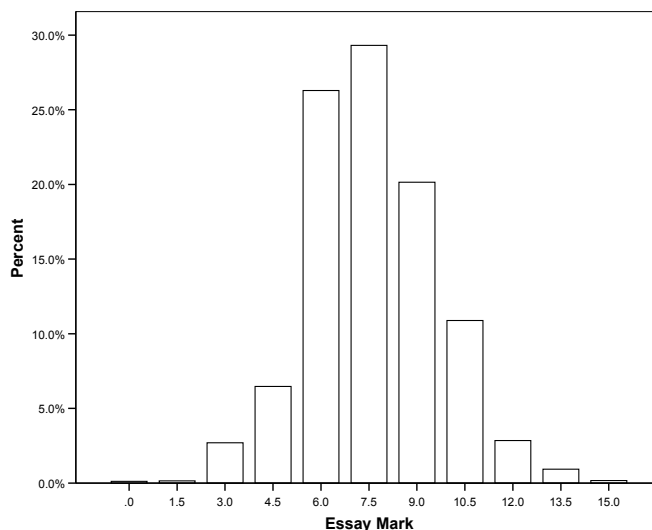
A good answer with few of the weaknesses allowed for Score 9 answers.

### Score 15

An excellent answer with compelling use of English, clear construction, unimpeachable logic and so on.

The distributions of October 2007 BMAT essay marks are shown below.

### Section 3: Writing Task



The use of BMAT results in the admissions process varies from institution to institution. If you require more information about how your results will be used, please contact the institution(s) to which you have applied.