

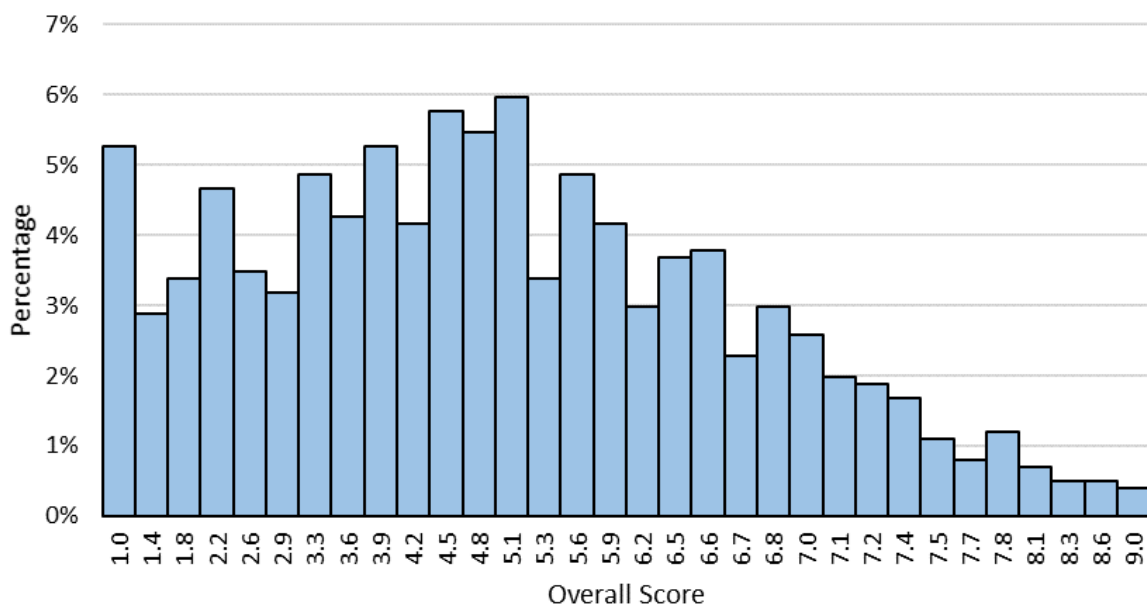
Test of Mathematics for University Admission (TMUA) Explanation of Results

Results for TMUA are reported on a scale that runs from 1 (low) to 9 (high), with scores being reported to one decimal place.

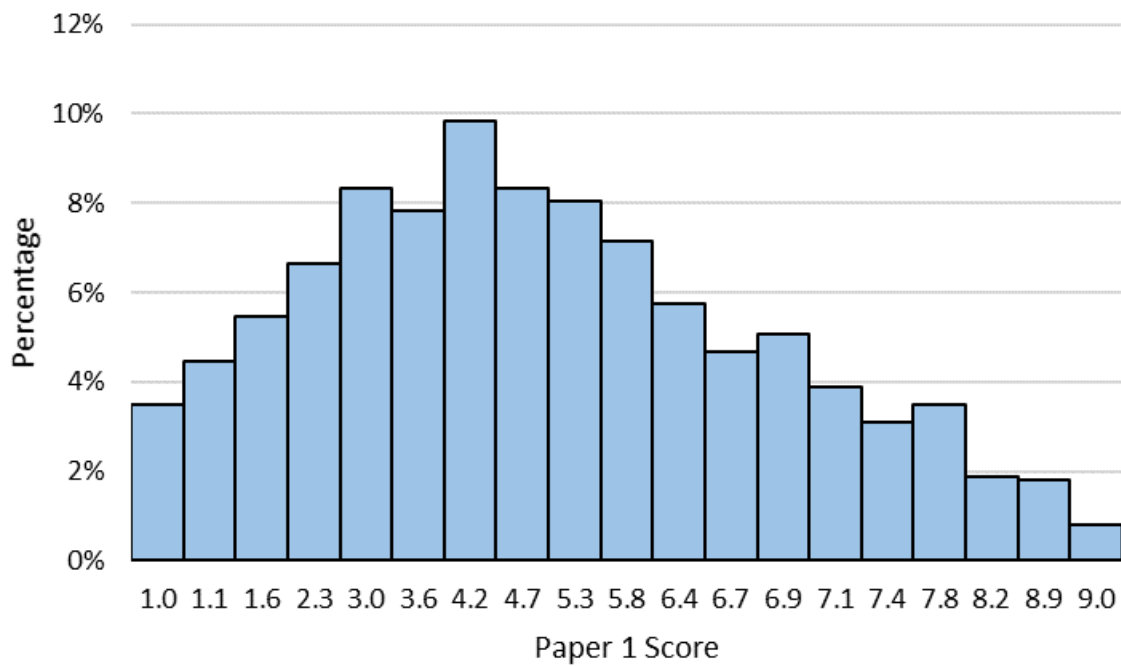
The scale has been designed so that approximately one third of candidates will achieve overall scores higher than 6.5. High scores are capped at 9.0.

The distribution of the 2020 TMUA scores, overall and for Papers 1 and 2 are shown below.

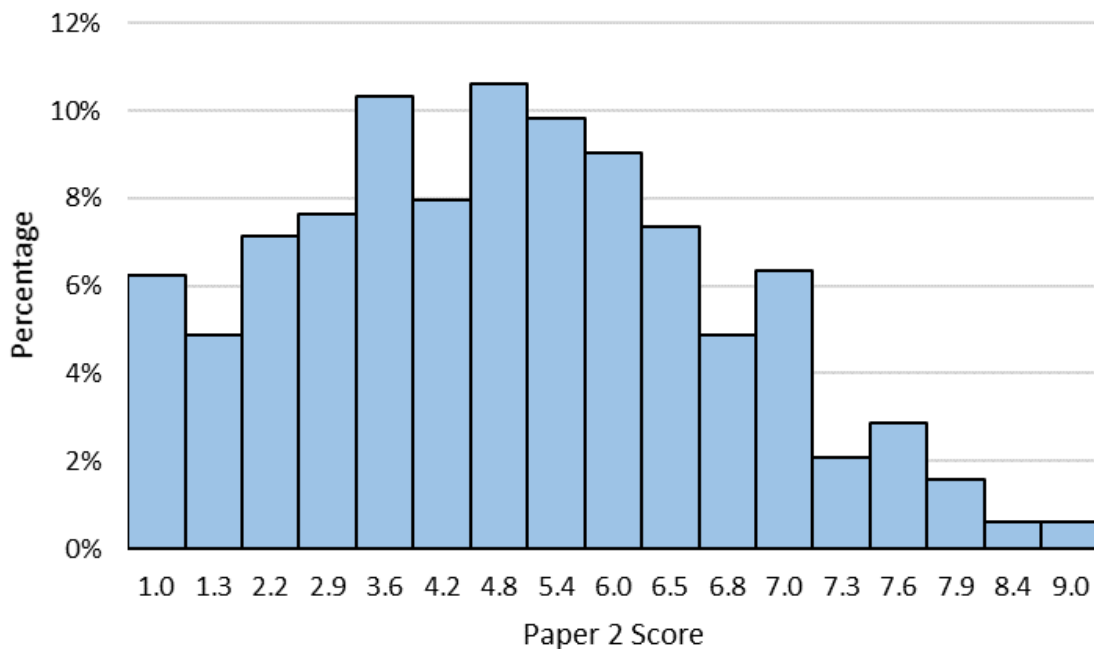
Overall score distribution



Paper 1 score distribution



Paper 2 score distribution



This document was initially designed for print and as such does not reach accessibility standard WCAG 2.1 in a number of ways including missing text alternatives and missing document structure.

If you need this document in a different format please email admissionstesting@cambridgeassessment.org.uk telling us your name, email address and requirements and we will respond within 15 working days.